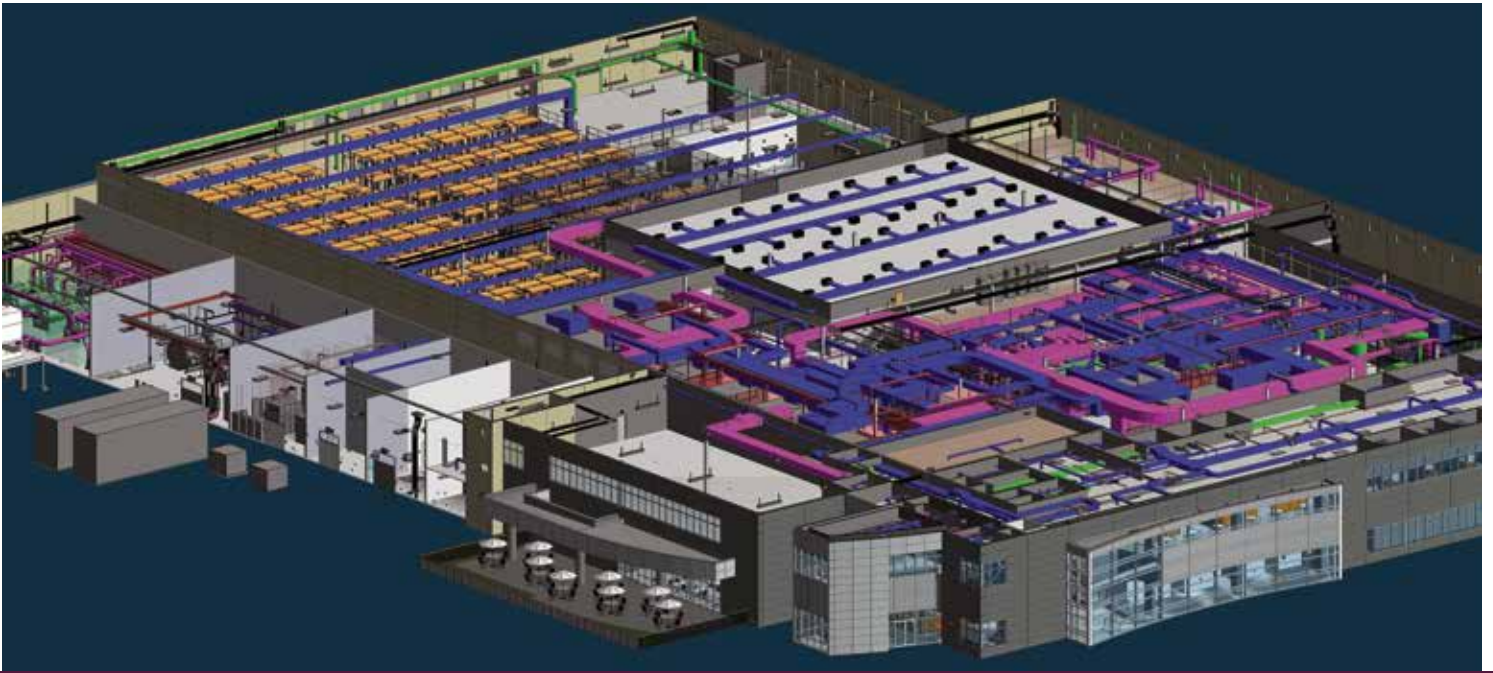




# pharmaceutical and biotechnology

⌘ ssoe®. making clients successful.



## **Why SSOE?** The SSOE Experience is the combination of our Value Promise and Great Client Service that results in trusted relationships.

To consistently exceed clients' expectations is a common goal in our industry. So, how is our promise of outstanding performance any different from others? We have proof. Greater than 98% of clients we surveyed would recommend SSOE Group to a colleague. And more than 150 of our clients have been with us for at least 20 years. These endorsements are a result of our Great Client Service—our corporate-wide commitment to understand and exceed your expectations and deliver unexpected benefits.

For decades, we've found ways to deliver greater value to clients. You can count on us to deliver high quality projects, on schedule, with fewer problems, and for lower total cost to save you time, trouble, and money. SSOE's commitment to documenting savings on our projects equal to our fee, known as our Value Promise, has resulted in a culture that inspires us to constantly look for better ways to do things. Through this Value Promise SSOE returned 105% of our fee to clients in the form of project savings over the last 5 years.

---

### **Advantages**

- We utilize Virtual Design and Construction (VDC) for project execution to transform the sequential and separate work processes of designing, constructing, commissioning, and operating a facility into a concurrent, collaborative process. The result is schedule compression, reduction of the overall project cost, and improved quality.
- In addition to our strong experience in pharmaceutical and biotechnology industries we are known for our work in other highly regulated markets: personal care, chemical, and food. This broad perspective enables SSOE to develop unconventional solutions and to identify opportunities for technology transfer.
- With our extensive international project experience and established local partnering agreements in over 100 countries, we can help you grow wherever opportunities exist for your business.

## SSOE Facts

- SSOE was founded in 1948 and currently has more than 20 locations worldwide.
  - We are a global project delivery firm for architecture, engineering, and construction management, with projects in 40 countries.
  - SSOE offers program management services from design through construction, to commissioning and start-up, for seamless project delivery.
  - SSOE's focus is using the appropriate project delivery method for your goals, including Virtual Design and Construction (VDC), which brings our clients better and faster results through more integrated teams and advanced technologies. Even when a more traditional delivery model is used, you'll see significant benefits from the collaboration strategies and technological capabilities our leadership in VDC necessitates.
- 



## Project Types

### Process

- Accumulators
- Active Pharmaceutical Ingredient (API) Process
- Aseptic process
- Barrier technology
- Baggers / Pouchers
- Batching / Blending
- BioPharma process
- Biotech
- Bulk pharmaceutical process
- Case erectors and sealers
- Clean in Place (CIP)
- Coaters
- Conveying systems and cooling tunnels
- Cookers and ovens
- Evaporators
- Extruders
- Fillers / Steamers
- Flash coolers

- Freeze drying and lyophilization
- Labeling systems
- Manufacturing of final dosage forms
- Mixers
- Packaging, material handling, distribution
- Palletizers
- Process automation and controls
- Retort sterilizers
- Sterilization / Steam in Place (SIP)

### Facilities

- Central Utility Buildings (CUBs)
- cGMP production facilities
- Laboratories and vivariums
- Offices
- Pilot plants
- Power plants
- Qualified utilities
- Sterile cleanrooms
- Validation and commissioning

## Representative Clients

- Abbott Laboratories
- Albany Molecular Research
- Bioject
- Bristol-Myers Squibb
- Coviden
- Genentech
- Johnson & Johnson
- Kemin Industries
- Novartis Pharmaceuticals
- Novartis Vaccines & Diagnostics
- Qualitest
- Regeneron
- Sandoz
- Synthetech
- Pfizer

## Locations

Albany, NY  
Alliance, OH  
Atlanta, GA  
Birmingham, AL  
Chandler, AZ  
Chengdu, China  
Cincinnati, OH  
Columbus, OH  
Hamburg, Germany  
Huntsville, AL  
Kalamazoo, MI  
León, Mexico  
Lima, OH  
Midland, MI  
Monterrey, Mexico  
Mumbai, India  
Nashville, TN  
Omaha, NE  
Penang, Malaysia  
Portland, OR  
Raleigh-Durham, NC  
Riverside, CA  
St. Paul, MN  
Santa Clara, CA  
Shanghai, China  
Shenzhen, China  
Toledo, OH  
Troy, MI  
Washington, DC

## Markets

Energy  
Life Sciences  
Manufacturing / Process  
Telecommunications

## Services

Architecture  
Construction management  
Data / Fire / Security  
Energy consulting  
Engineering  
Master planning  
Procurement  
Project / Program management  
Site selection  
Tool install  
Virtual Design and Construction

## Rankings

*Engineering News-Record (ENR)*

- Top 10 Manufacturing Design Firm for the past 6 years
- Top 20 Chemical Plant Design Firm for the past decade

*ENR Global Sourcebook*

- Top 35 International Manufacturing Design Firm for the past 5 years

*Building Design + Construction (BD+C)*

- Top 10 Engineering / Architecture Firm for the past 5 years
- Top 10 Industrial Engineering Firm for the past 5 years
- Top 15 BIM Engineering Firm for the past 6 years

Named "Best AEC Firm to Work For"  
*(Building Design + Construction)*

Named a "Great Workplace"  
*(Great Place to Work®)*