



SSOE Group is an international EPCM firm ranked eleventh among the largest engineering and architecture firms (Building Design + Construction, 2009). SSOE has also been named one of the "Best AEC Firms to Work For" (Building Design + Construction) and as one of the fastest-growing firms by Inc. Magazine, 2009 and ZweigWhite, Hot List 2009.

With 19 offices around the world, SSOE is a leader in providing sustainable and renewable solutions. The company has earned a solid reputation providing architecture, engineering, procurement, and construction management services to the healthcare, automotive, science and technology, energy, alternative energy, biofuels, chemical, food and beverage, glass, and consumer products industries. SSOE has completed projects in more than 30 countries. Visit www.ssoe.com for additional information and career opportunities.



**Volkswagen Group of America
Automotive Production Facility**

Chattanooga, Tennessee

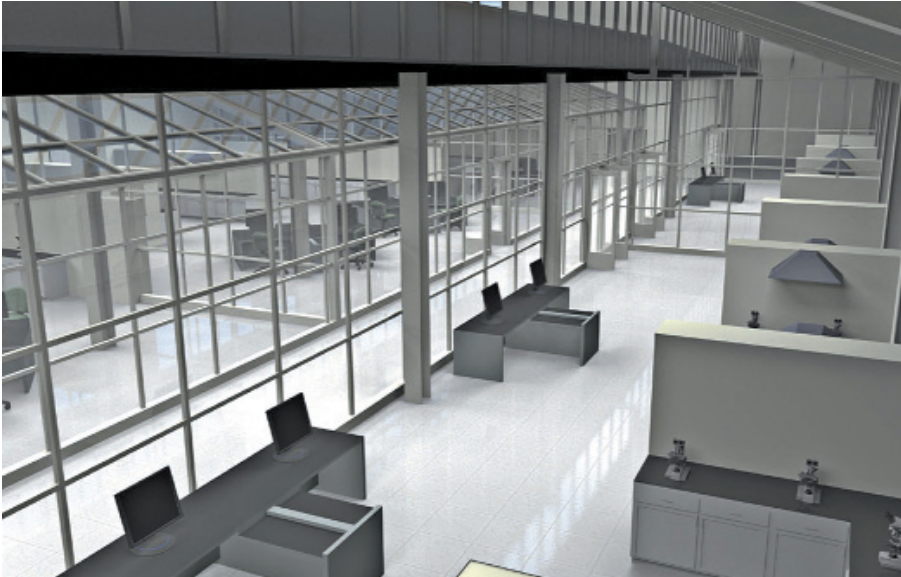
Having successfully performed design work for more than 50% of all automotive assembly plants built in the United States over the last ten years, Volkswagen called upon SSOE Group to oversee architecture, engineering, and construction management services for their new production facility. The 1,350-acre greenfield site includes conventional steel framed buildings with concrete columns, steel floor / roof structures, metal wall panels, and a single-ply membrane roof. The plant will have the capacity to annually produce 150,000 mid-sized vehicles.

The primary manufacturing operations will include weld, paint, and assembly, with other facilities to include outbound logistics, extensive training center, media (utility) center, social hall with cafeteria, technical center, tank farm, and fire station.

The A/E services involved are site / civil, architectural, structural, mechanical, fire protection, plumbing, electrical, and wastewater treatment. SSOE also partnered with firms for the environmental permitting process and the facilities construction management.

Aerial photography by Aerial Innovations***





**The University of Toledo
North Engineering Lab Upfits**

Toledo, Ohio

SSOE provided planning, programming, and conceptual design for this conversion of an existing facility (previously of an industrial nature) into specialized lab facilities, including a new fuel cell research laboratory, dynamometer facilities, nanopolymer, and environmental laboratories. Phase I, which consisted of fuel cell and instrumentation laboratories, has already been completed.

Phase II is currently underway and will include design of flexible laboratory spaces for advanced materials, energy, environmental, biomedical, and biotechnology research. The renovated space will also include instructional areas and spaces for student collaboration. The project necessitated the evaluation and continuation of existing building systems along with chiller capacity expansion and provisions for additional lab expansion within the existing space. SSOE applied its BIM-based, 3D capabilities to create stationary images and a walk-through video of the facility.



Renderings provided by SSOE



**Mercy Health Partners, Mercy Tiffin Hospital
New Hospital and Medical Office Building**

Tiffin, Ohio

Aiming to increase patient access to state-of-the-art medical technology and professional healthcare services, Mercy Tiffin Hospital sought SSOE's expertise to construct a new, fully integrated hospital and medical office building.

In approaching the project, SSOE partnered with the construction manager and several key trade contractors—an integrated project delivery collaboration that allowed for unrestrained discussion about cost-saving strategies and methods of accelerating the project schedule. The result of these incorporated efforts is a new, full-service healthcare facility featuring superior technology and expanded accommodations for guests, visitors, and staff members.

SSOE created a welcoming and modern hospital environment to maximize patients' privacy, safety, and comfort during recovery. In addition to increasing patient access to innovative medical equipment, physicians' offices, and professional health services, the new hospital includes a spacious layout that has vastly improved patient flow.

DESIGN

To create a consistent and distinctive image for the new Mercy Tiffin, custom interior design elements—including floor patterns, casework, and signage—were carried throughout the hospital. Soothing color palettes and inviting lounge areas provide therapeutic spaces for patients' family members. A new coffee shop and restaurant-style café complete the amenities.

"SSOE Group listened to our concerns and guided the design process to create this "state-of-the-art" facility".

- Dale Thornton, President / CEO, Mercy Tiffin Hospital



Interior photos provided by Dennis Greaney and Thomas Franks
Exterior image provided by Thomas Ethington

