

HEALTHCARE

UAB Women and Infant's Facility

Birmingham, AL



The scope of the project is a 639,000 square-foot, nine-story, freestanding hospital with regional, speciality women and infant's services, a speciality radiation oncology center, and medical office and clinical spaces.



The Women and Infant's Center encompasses 389,000 square feet on 7 floors, with an additional 60,000 square feet of shell space for future growth. The radiation oncology center occupies 70,000 square feet on parts of two floors. The top two floors of 120,000 square-feet are planned for medical offices and clinics.

CRS Engineering & Design Consultants provided fully integrated Mechanical, Electrical, Plumbing and Fire Protection Engineering as part of the owner's design team using a bridging project delivery method.

MEP systems features:

- Electrical and HVAC systems designed to comply with ASHRAE 90.1-2004 Energy Efficiency standard, in accordance with the Green Guide for Healthcare v 2.1.
- On-site hot water boiler plant with redundant 800 hp bi-fuel boilers.
- Standby emergency power plant with two 1500kW diesel gensets, with provisions for a 3rd, with 5000 AMP paralleling switchgear.
- A 30,000 gallon underground fuel oil storage and delivery system.
- Electrical service provided with reliable spot-network served with four 2500kVA transformers and two 4000 AMP main switchgear.
- Power quality for Radiation-Oncology systems with four 45kVA Rotary Power Conditioners.
- A 160kVA central uninterruptible power system to support IT and medical systems infrastructure.
- On-site medical air and vacuum systems.
- Connection to campus district chilled water and medical gas (oxygen) plants.

OWNER

The University of Alabama at Birmingham

ARCHITECT

AE Design - Atlanta GA
Perkins+Will - Atlanta GA

PROJECT SIZE

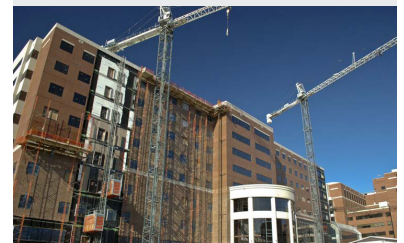
639,000 SF
Nine-story, freestanding
55 neo-natal ICU beds
52 CCU nursery beds
17 LDRP
4 Delivery ORs
118 ante and post partum patient rooms
3 Varian Linear Accelerators
1 CT and, 1 Varian Simulator

CONSTRUCTION BUDGET

\$160 million

SERVICES

M/E/P/FP



www.crsegr.com

