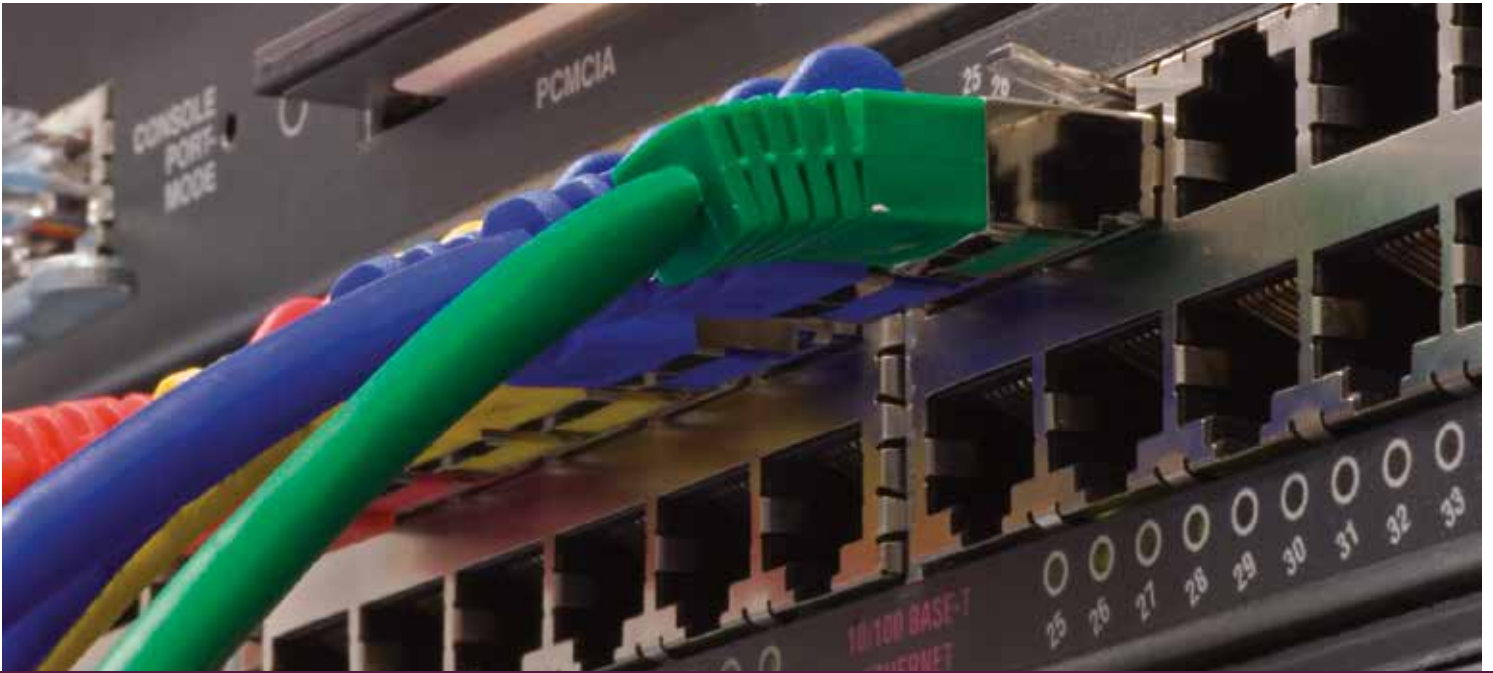




data / fire / security

⌘ ssoe®. making clients successful.



Why SSOE? The SSOE Experience is the combination of our Value Promise and Great Client Service that results in trusted relationships.

To consistently exceed clients' expectations is a common goal in our industry. So, how is our promise of outstanding performance any different from others? We have proof. Greater than 91% of clients we surveyed would recommend SSOE Group to a colleague. And more than 150 of our clients have been with us for at least 20 years. These endorsements are a result of our Great Client Service—our corporate-wide commitment to understand and exceed your expectations and deliver unexpected benefits.

For decades, we've found ways to deliver greater value to clients. You can count on us to deliver high quality projects, on schedule, with fewer problems, and for lower total cost to save you time, trouble, and money. Through this Value Promise SSOE returned 126% of our fee to clients in the form of project savings over the last 3 years.

"During the ten years I've been its client, SSOE Group has met my wide range of engineering needs including fire detection / prevention and mass notification. They perform in an ethical manner and strive for excellence in meeting project goals. The persons with whom I've worked are highly professional and are constantly looking for ways to improve their performance. They are readily available and very willing to meet even rigorous project schedules."

Jeffrey Pulter, Electrical and Instrumentation Coordinator
Marathon Oil Company – Detroit Refinery

Advantages of Data / Fire / Security Services

- Our certified NICET and RCDD designers are experienced and keep updated on all aspects of security, communications, fire alarm, and low voltage systems.
- We perform all data, fire alarm, and security design and integration services in-house. This approach facilitates improved coordination between engineering disciplines.
- Because we are independent of any equipment supplier, we recommend the best equipment for your needs without vendor bias.
- We specify sustainable and recyclable products whenever possible, as well as low power-consuming equipment that can reduce both harmful emissions and overall energy costs.
- Our experience with a wide range of systems and advanced technology, allows us to integrate multiple systems for seamless functionality. For example: We integrate fire alarm systems with CCTV and access control systems to provide a single point of notification and control. Also, we integrate fire alarm systems with production equipment. This enables the command center to shut down equipment in a specific area when an alarm is detected to prevent loss or damage.



Project Types

- Access control and security
- Asset tracking
- Budget estimating
- Building automation
- Cabling management and distribution
- CCTV and CATV
- Command and control facilities
- Data centers, server rooms
- Data, fire, and security audits
- Emergency communications
- Environmental monitoring
- Fire alarm and control systems
- High-end lighting and energy control
- LEED® certification
- Mass notification
- Muster and accountability systems
- Operational control rooms
- Paging
- Sound, audio, and videoconferencing systems
- Time, attendance, and productivity tracking
- Voice, data, LAN, and WAN
- Wireless data and telephone

Representative Clients

- Adtran
- British Petroleum (BP)
- Children's Hospital of Alabama
- Cisco
- ConAgra
- Diebold
- Dow Chemical
- Duke Energy
- Exxon Mobil
- FirstEnergy
- Ford
- General Electric
- General Motors
- Goodyear Tire & Rubber Company
- HealthSouth
- Honda
- Kellogg Company
- Marathon
- Mercedes Benz of America
- MGM Mirage Hotel, Las Vegas
- Michigan State University
- Nissan North America
- Owens Corning
- ProMedica Health System
- Purdue University
- Raytheon
- Sunoco
- The Hershey Company
- The Procter & Gamble Company
- The University of Alabama at Birmingham
- Toyota
- Tyco
- U.S. Air Force
- U.S. Army
- United Technologies
- University of South Carolina
- University of Toledo
- Veterans Administration Medical Centers
- Volkswagen

Locations

Albany, NY
Alliance, OH
Atlanta, GA
Birmingham, AL
Chandler, AZ
Cincinnati, OH
Columbus, OH
Denver, CO
Hamburg, Germany
Huntsville, AL
Kalamazoo, MI
León, Mexico
Lima, OH
Midland, MI
Mobile, AL
Monterrey, Mexico
Mumbai, India
Nashville, TN
Omaha, NE
Penang, Malaysia
Portland, OR
Raleigh-Durham, NC
Riverside, CA
Santa Clara, CA
São Paulo, Brazil
Shanghai, China
St. Paul, MN
Toledo, OH
Troy, MI
Washington, DC

Markets

Energy
Life Sciences
Manufacturing / Process
Telecommunications

Services

Architecture
Construction management
Data / Fire / Security
Energy consulting
Engineering
Master planning
Procurement
Project / Program management
Site selection
Tool install
Virtual Design and Construction

Rankings

Engineering News-Record (ENR), 2015

- Top 10 Manufacturing Design Firm for the past 4 years
- Top 10 Food and Beverage Design Firm for the past 9 years
- Top 20 Chemical Plant Design Firm for the past decade
- Top 20 Industrial Process Design Firm for the past decade
- Top 100 Green Design Firm for the past 7 years

Building Design + Construction, 2015

- Top 10 BIM Engineering Firm for the past 4 years
- Top 10 Engineering / Architecture Firm for the past 3 years
- Top 10 Industrial Sector Engineering Firm for the past 3 years
- Top 15 Reconstruction Engineering Firm for the past 3 years
- Top 50 Retail Engineering Firm for the past 3 years
- Top 50 Healthcare Engineering Firm for the past 3 years

Named "Best AEC Firm to Work For"
(Building Design + Construction)

SSOE Facts

- SSOE was founded in 1948 and currently has more than 20 locations worldwide.
- We are a global engineering, procurement, and construction management (EPCM) firm with projects in more than 30 countries.
- Our project management standards are drawn from the Project Management Institute. In fact, SSOE's goal is to have all of our project managers earn the prestigious designation of Certified Project Management Professional (PMP).
- SSOE offers program management services from design through construction, to commissioning and start-up, for seamless project delivery.
- Our energy consulting services offer a holistic approach to meeting your renewable energy, conservation, and sustainable design goals. We have more than \$1 billion in projects that have been LEED® certified.



www.ssoe.com/dfs



© SSOE Group, 2015

The USGBC logo is a trademark owned by the U.S. Green Building Council and is used by permission.