

BIM2Fab™ STEEL

SEAMLESSLY INTEGRATES STEEL DESIGN, FABRICATION,
AND ERECTION—DELIVERING EXCEPTIONAL QUALITY WITH
REDUCED COST AND A FASTER SCHEDULE

CLIENTS

BMW
Betco Corporation
Confidential Tire
Manufacturer
General Motors
Guardian Glass
Honda
Kenworth
O-I
Pepperidge Farm
Saint-Gobain
SC Johnson
Select general
contractors and
steel fabricators
Toyota
UPS

Critical path schedules. Fluctuating material prices and availability. Significant investment. A complex path from engineer to detailer to fabricator to erector.

Each step adds cost and an opportunity for error. The combination of these factors makes structural steel installation one of the most critical factors in project success.

Managing your steel from concept to installation.

SSOE's BIM2Fab Steel enables you to minimize the risk and cost of structural steel while delivering the quality your facility demands. Our virtual technology brings the hand-offs from the field and into the office. BIM2Fab Steel not only streamlines these steps, it transforms the software used for designing, detailing, and installing into one virtual environment. It enables you to view each step and make decisions early in the project, saving you time, trouble, and money later.

Our team has successfully completed over 60 projects, totaling 21,000+ tons.

70 YEARS
YEARS OF EXPERTISE

70 years and counting
of structural steel
expertise



40 COUNTRIES
STEEL INSTALLATION

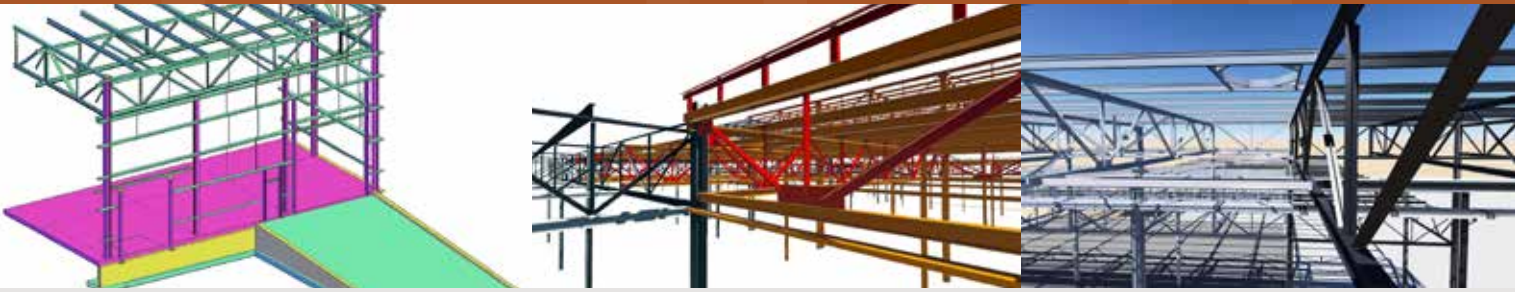
We've installed structural steel
into facilities in 40 countries for
thousands of clients



200+
ENGINEERING RESOURCES

SSOE has more than 200
engineers and steel detailers
registered in 50 states





🎯 ADVANTAGES OF BIM2FAB STEEL

STREAMLINED AND SEAMLESS INTEGRATION THROUGH ONE VIRTUAL MODEL THAT PRODUCES:

- Fabricator-ready models
- Approved shop drawings
- CNC programs
- Mill order lists

EXCEPTIONAL QUALITY

- Advanced clash detection
- Limited field errors
- Methodical control from design through construction

REDUCED COST

- Optimized detailing in a virtual environment
- Accurate bids and estimates
- Reduction in field change orders

REDUCED SCHEDULE BY A MINIMUM OF 4 WEEKS

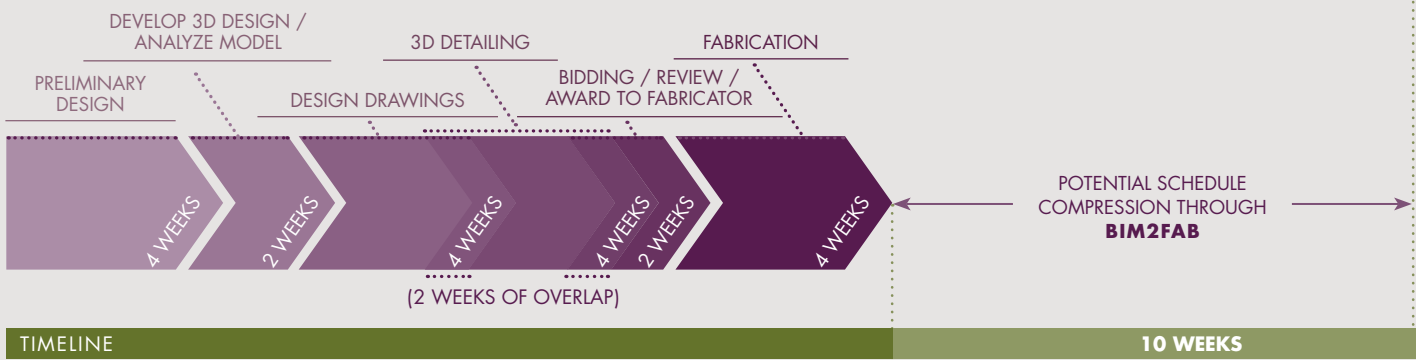
- Steel lead times
- Design and approval process
- Analysis and options

REPRESENTATIVE SCHEDULE COMPRESSION THROUGH BIM2FAB STEEL

TRADITIONAL DETAIL / MANAGEMENT METHOD (SEQUENTIAL)



BIM2FAB STEEL DETAILING / MANAGEMENT (CONCURRENT)



*Based on 500 tons Source: Engineering News-Record

18 WEEKS

28 WEEKS