



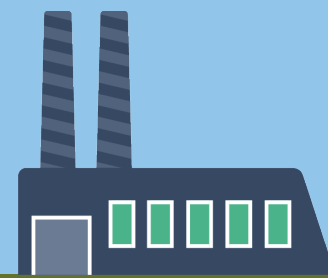
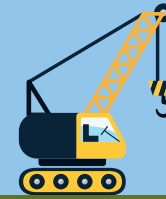
# SUSTAINABILITY REPORT

## 2019-2020

Our sustainability mission is to create sustainable business, sustainable communities, and a sustainable world, one project at a time, through practices that balance cultural, environmental, and economic concerns.



# SUSTAINABLE PROJECT DESIGN



**7.9 million**

square feet of LEED-certified projects designed as of 2020, contributing significant savings in water, energy, and construction waste

**\$61 million**

savings accumulated from 2010 to 2020 resulting from SSOE's LEED-certified projects



## WATER

SSOE is committed to reducing the volume of water utilized in the built environment. We track water usage on all of our LEED projects:

**46%**

water saved annually per project (average 2011-19)

**9.5MM**

gallons of water saved annually

**71.89MM**

gallons of water saved to date over lifecycle of designed facilities



## WASTE

SSOE's Construction Waste Management Program specifies a corporate goal of reducing the volume of construction and demolition waste disposed of in landfills and incinerators.

**GOAL 75%**

of construction waste diverted annual average

**RESULTS 84%**

of construction waste diverted annual average

**168,215**

tons of construction waste diverted to date



## ENERGY

Saving energy reduces greenhouse gas emissions and it makes sense from an operational standpoint as well.

**29%**

energy saved annually per LEED project (average 2011-19)

**\$8.5MM**

annual documented energy savings

**672,748 MMbtu**

total energy saved annually

**5,036,367 MMbtu**

energy savings accumulated to date over life cycle of designed facilities

**139,402 Metric Tons**

of CO2 Emissions reduced annually, equaling emissions from 322,745 barrels of oil

**1.04MM Metric Tons**

of CO2 Emissions reduced over the life cycle of designed facilities, the equivalent of an oil supertanker carrying 2,407,820 barrels of oil



# OPERATIONAL GREENHOUSE GAS REDUCTION GOALS

SSOE is powered by 100% renewable electricity in our office operations

**SUMMARY:** 2,380 metric tons of GHG emissions removed from the atmosphere in 2019, which equates to a 13% reduction from our 2016 baseline.



IN 2016, SSOE SET INTERNAL GOALS TO REDUCE OUR OPERATIONAL IMPACT ON THE ENVIRONMENT BY 2020. **GOALS / PROGRESS:**

**100%**

electricity purchased from renewable sources

**10%**

reduction in corporate air travel by 2020

**10%**

reduction in GHG emissions generated by employee use of single-occupancy vehicles by 2020

Support our Flexible Work Arrangement (FWA) program to encourage further reduction in employee commuting

Provide employee incentives for electric and hybrid vehicle use

**100%**

goal achieved

**13%**

goal surpassed

**5.15%**

goal fell short

**Goal achieved.** GHG emission reduction is included in single occupant vehicle reduction goal



## ALTERNATE TRANSPORTATION PROGRAM ADJUSTMENTS

In 2014, SSOE started an Alternative Transportation Program to reduce the impact of single-occupant vehicles on the environment. By offering an incentive to employees who use alternate forms of transportation for their daily commute, SSOE has tracked over 1.3 million miles traveled using alternate transportation. SSOE will continue to strive towards our stated goal of 10% reduction during 2020. We are simplifying our tracking system and expanding our FWA program. Acknowledging that 90% of all SSOE GHG emissions come from corporate air travel, employees are encouraged to increase the use of technology, remote meetings, and review the necessity of corporate air travel.

**37%\***

Since tracking began in 2016, SSOE has reduced usage of corporate owned fleet vehicles by 37%, from 64,275 miles to 42,125 miles

**488,400\***

miles driven utilizing personal vehicles for business travel

**851,251\***

miles reported from a corporate rental car vendor. Additional vendors are anticipated reporting in 2020

**3,785,225**

miles of corporate air travel averaging 4,040 miles per employee, a 13% reduction from our 2016 baseline

**485,250**

vehicle miles traveled using alternate transportation in 2019. Approximately a 200,000 mile per year increase over 2016

**90**

hours per person of remote meetings (annual average 2019- 2020), a 41% increase over 2016 baseline

\*New and expanded GHG emission studies included in the 2019 reporting.

# SUSTAINABILITY INSIDE SSOE

**OUR SUSTAINABILITY VISION STATEMENT:** We are the global project delivery company that leaves green footprints around the world. We champion worldwide health and safety, nurture sustainable innovations, thoughtfully endow projects with green materials and methods, and inspire others to think sustainably.



We are committed to transparency and driving sustainable economies. SSOE will hold ourselves accountable to this Sustainability Policy. Our goals and metrics are reviewed annually. Supporting data is accessible internally and can be made available upon request.



Upgrades to the mechanical system controls in the SSOE Headquarters allows improved control over ventilation and humidity, reducing energy consumption and increasing air quality. A 30% reduction in electricity usage is anticipated.



The SSOE World Headquarters has a three year phased plan to upgrade to high efficiency LED lighting. Phase 1 is complete, which included replacing general illumination with LED lighting at night and daylight sensors adjacent to skylights to reduce electrical consumption.



Access to clean water is a top priority. SSOE has installed water filters in all of our offices. Through the combination of education to increase awareness of the environmental impacts of single-serve water bottles, giveaways of reusable water bottles to all employees, and adding counters on the bottle filling stations, our corporate office has reduced 153,322 single-serving water bottles from its waste stream since February 2017. This amounts to 154 water bottles per person per year.



We continue to stress the importance of recycling in our offices by conducting waste audits, as well as providing education and resources for employees to reduce, reuse, and recycle. In 2020, SSOE will upgrade our recycling signage to increase effectiveness and reduce cross-contamination of waste streams.



SSOE has an ongoing program to improve efficiency in our offices. We review all leasing agreements to ensure sustainability is addressed upon renewal.