

## “For Safety’s Sake - Do Something”

### CONSTRUCTION SAFETY TALK SERIES - THE FATAL FOUR (FOCUS FOUR) FALL HAZARDS

**Fall Hazards led to 349 construction worker deaths in 2014 (40% of construction site fatalities). By identifying these hazards, and understanding how they happen, we can take steps to protect ourselves.**



**According to OSHA...  
Fall Hazards are  
defined as:**

*Anything at your work site that could cause you to lose your balance or lose bodily support and result in a fall.*

For more information and training on how to prevent the Focus Four Hazards, please visit: [https://www.osha.gov/dte/outreach/construction/focus\\_four/index.html](https://www.osha.gov/dte/outreach/construction/focus_four/index.html)

#### TYPES OF FALL SITUATIONS AND WHAT TO BE AWARE OF:

##### Roof edges, roof and floor openings, structural steel and leading edges

Roofing falls are the leading cause of roofing injuries and fatalities. Roofing, siding, and sheet metal work have the highest rate of occupational injuries and illnesses for a non-manufacturing industry.

##### Improper Scaffold Construction

Falls from improperly constructed scaffolds can result in injuries ranging from sprains to death. Guardrails or personal fall arrest systems for fall prevention/protection are required for workers on platforms 10 feet or higher.

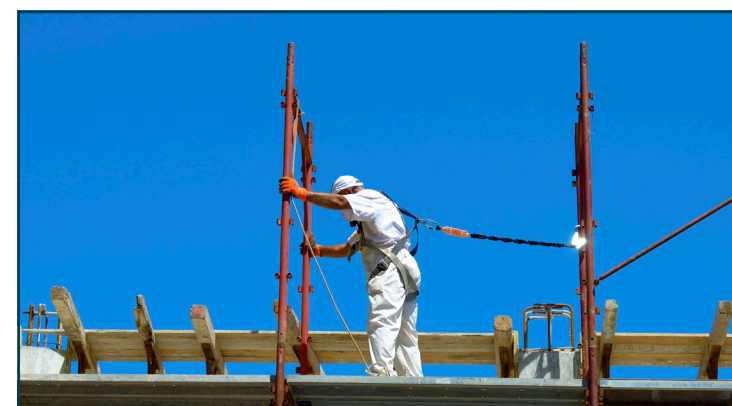
##### Unsafe Portable Ladders

You risk falling if a portable ladder is not safely positioned. While you are on a ladder, it may move and slip from its supports. You can also lose your balance while getting on or off an unsteady ladder. Falls from ladders can cause injuries ranging from sprains to death.

#### Fall Prevention / Fall Protection

- Plan ahead.
- Train everyone to use equipment safely.
- Understand your company’s written fall protection plan.
- Inspect fall protection equipment and devices before each use.
- Use fall protection equipment that is right for the task, fits properly, and is in good condition.
- Make sure that floor holes, open shafts, and riser penetrations are protected by sturdy guardrails or covers.
- Contact your supervisor if you see fall hazards or have questions about fall prevention.

**Do not work until unsafe conditions have been corrected!**



Join the National Safety Stand Down May 2-6  
The purpose of the National Fall Prevention Stand-Down is to raise awareness of preventing fall hazards in construction. For more information on how to participate, please visit: <https://www.osha.gov/StopFallsStandDown/>